

## AMERICAN CRIME

"You can get further with a kind word and a gun than you can with just a kind word."

—Al Capone

1. Starting right off with our annual F. Lee Bailey question. For one point, what does the "F" stand for?

FRANCIS

- 2-3. Actually, this year there are *three* F. Lee questions: Bailey got on the map by his defense of Dr. Sam Shepard in 1966. The defense was essentially that a one-armed intruder did it. That spooned both a movie and television series in which Dr. Richard Kimble cased the one-armed one while the authorities chased him. Both were entitled "The Fugitive." For two points, who played Dr. Kimble in each?

DAVID JANSEN

HARRISON FORD

4. Which hand did O. J. use to try on "his" glove?

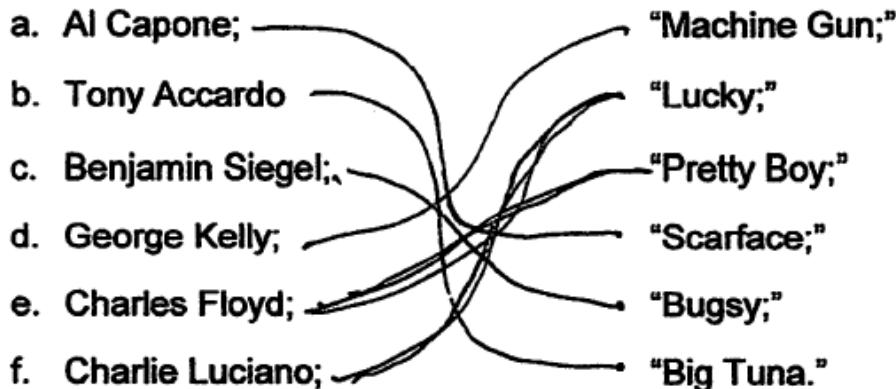
LEFT

5. For two points, the unrivaled "beautiful couple" of American crime was Bonnie and Clyde. Who played each in the 1967 movie "Bonnie and Clyde?"

WARREN BEATTY

FAYE DUNAWAY

- 6-11. Every American gangster had to have a nickname. For one point each match the following gangsters with their commonly-known nicknames:



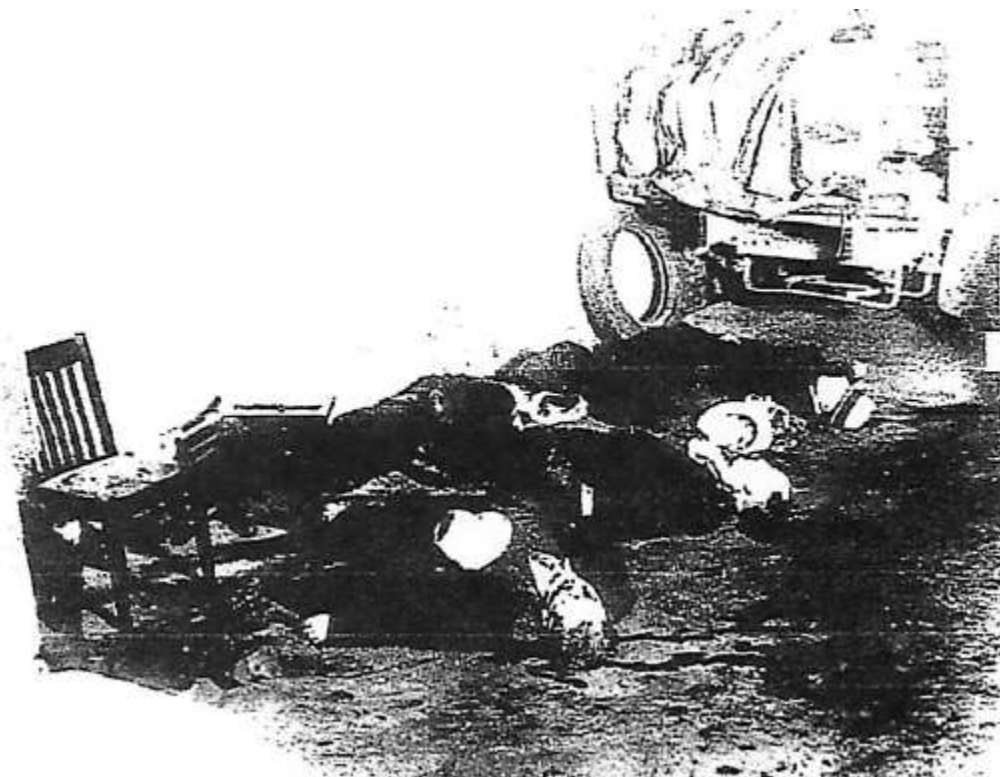
12. Perhaps the most infamous unsolved murder in gangster history is: "where is Jimmy Hoffa's body?" It has been 41 years almost to the day (Jimmy disappeared July, 30, 1975) he vanished.

For one point, where is it that rumor has it Jimmy is/was buried?

- a. New York Giants stadium in East Rutherford, New Jersey,
- b. In a 55-gallon drum in a New Jersey dump;
- c. Under a driveway in Roseville, Michigan;
- d. At a horse farm in Milford, Michigan;
- e. All of the above.

13. In 1929 seven members of the Bugs Moran gang were gunned down in a Chicago garage by Al Capone's gunmen. What has that event become known as?

- a. The St. Patrick's Day massacre;
- b. The All Saints Day massacre;
- c. St. Valentine's Day Massacre;
- d. St. Stevens Day Massacre.



14-15. Jimmy Hoffa *redoux*. Jimmy was the head of the most powerful union in the country in his heyday. For two points, what was that the union and who was the high – profile member of the 1960s Administration who targeted Jimmy?

TEAMSTERS  
BOBBY KENNEDY

16. Just over the hill is the notorious Florence "super Max" prison. For 1 point, which of the following is incarcerated there?

- a. Ramsey Yousif;
- b. The Unibomber;
- c. Terry Nichols;
- d. Richard Reid, the shoe-bomber;
- (e.) All of the above;

17. Henry Hill was notoriously featured in the 1986 book "Wiseguy: Life in a Mafia Family" and the 1990 film "Goodfellas". Who played Henry in the movie?

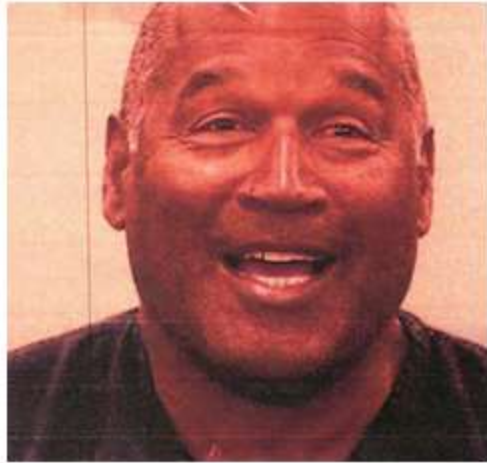
RAY LIOTTA

18. Maybe it's not strictly "American," but Sean Penn captured the media's attention recently when he met with the notorious Mexican drug Lord "El Chapo." What does "El Chapo" mean in English:

- a. Well-endowed.
- b. Fatso;
- c. Handsome;
- (d.) Shorty;

19. What is the name of the inventor of the Ponzi scheme?

- a. Charles;
- b. William;
- c. Larry;
- d. Orenthal James (pictured).



20. Who shot J. R.?

- a. Pamela Barnes Ewing;
- b. Sue Ellen;
- c. Lucy Ewing;
- d. Sue Ellen's sister, Kirsten.

# Pictures at Park



GIANTS STADIUM



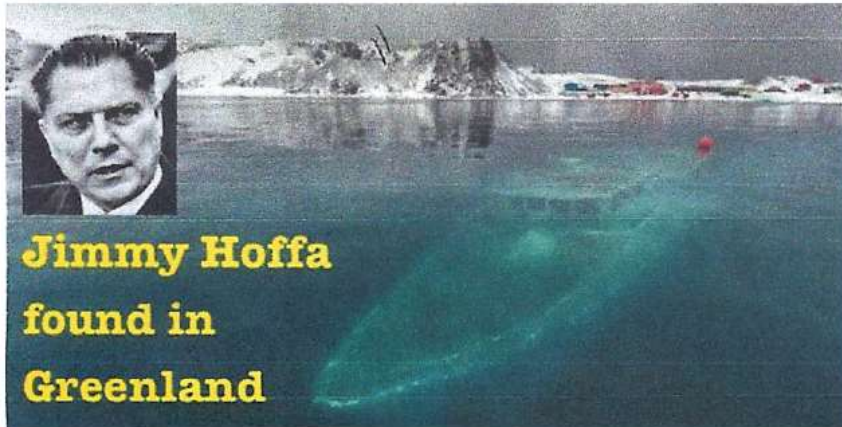
DRIVEWAY ROSEVILLE



HORSE FARM IN MILFORD



NEW JERSEY DUMP



**Jimmy Hoffa  
found in  
Greenland**

